

BASS GUITAR

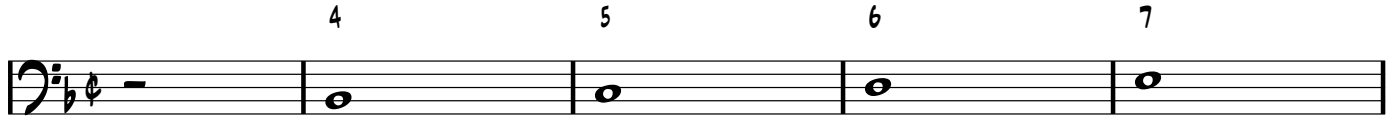
KEY OF F

WE WILL EXALT YOU

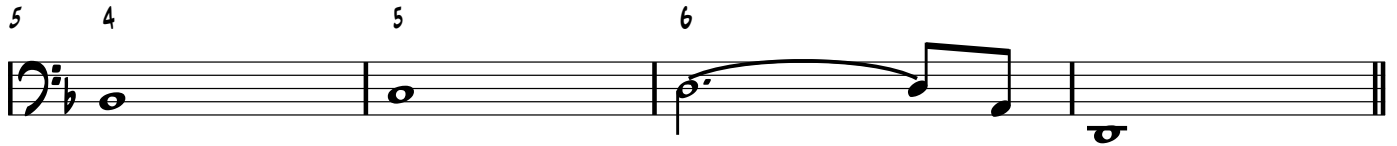
ARRANGED BY ROSS WARD

♩ = 54

4 5 6 7



5 4 5 6



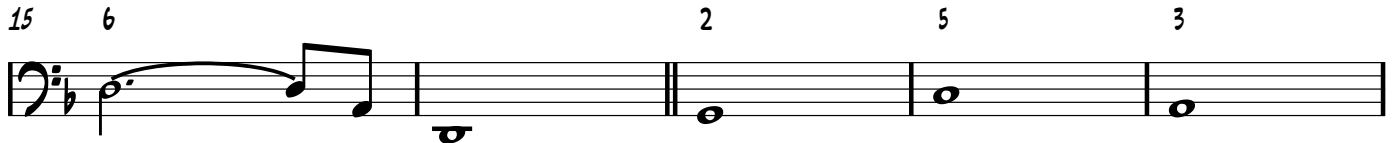
A

9 2 5 3 6 2 5



B

15 6 2 5 3



20 6 2 5 6 7



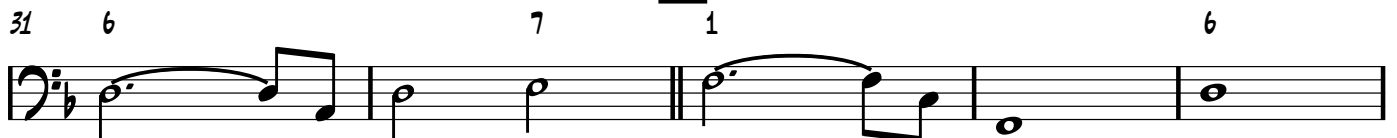
C

25 1 6 2 5



D

31 6 7 1 6



BASS GUITAR

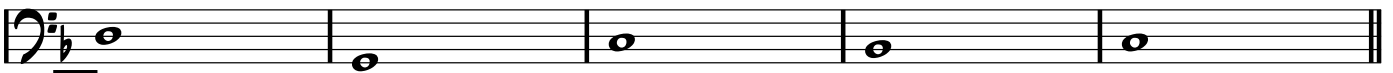
36

2

5

4

5



E

41

4

5

4

5



1.

2.

RIT.

45

6

6

